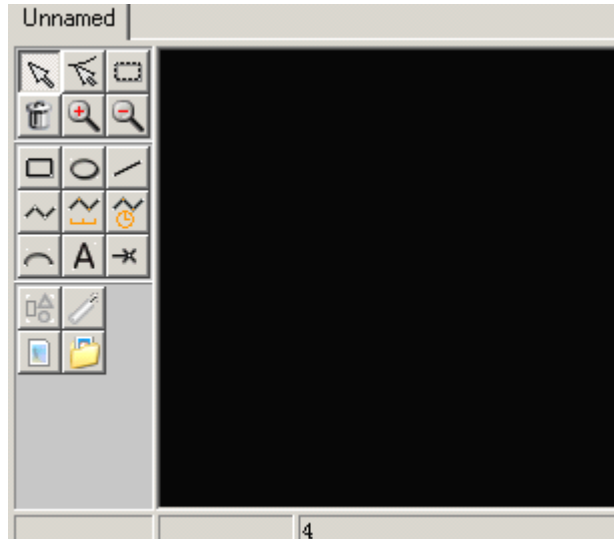


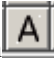
# Create ILD file

## Drawing Function



Click the left button on the icon on the toolbar, then release it, then click the left button in the drawing area, keep press the left button, drag the mouse until the proper size

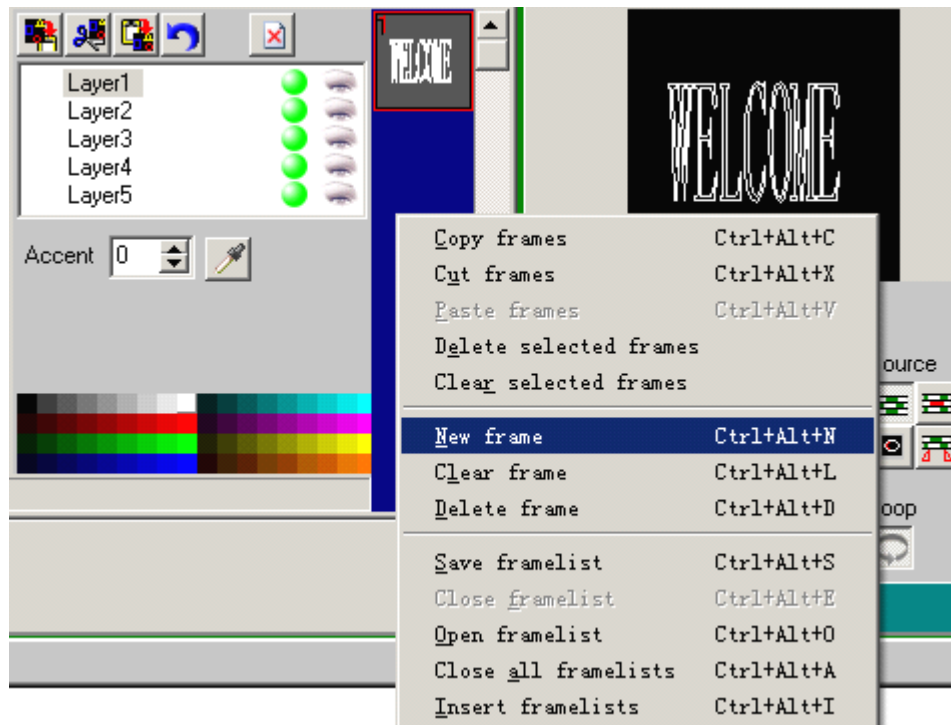
## Input words

Click the left button on the icon  on toolbar, then release left button, then click the left button in the drawing area, keep press the left button, release the left button, the text area

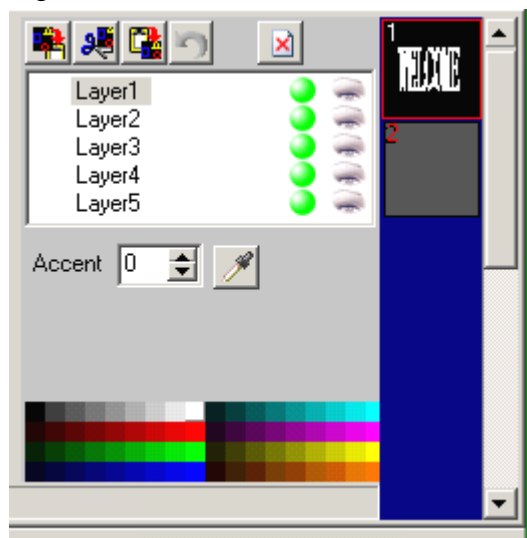
Text:

will occur. Input the words you want in this text box, the corresponding words also create in the drawing area. You can drag the words to resize in the drawing area

## Create new frames

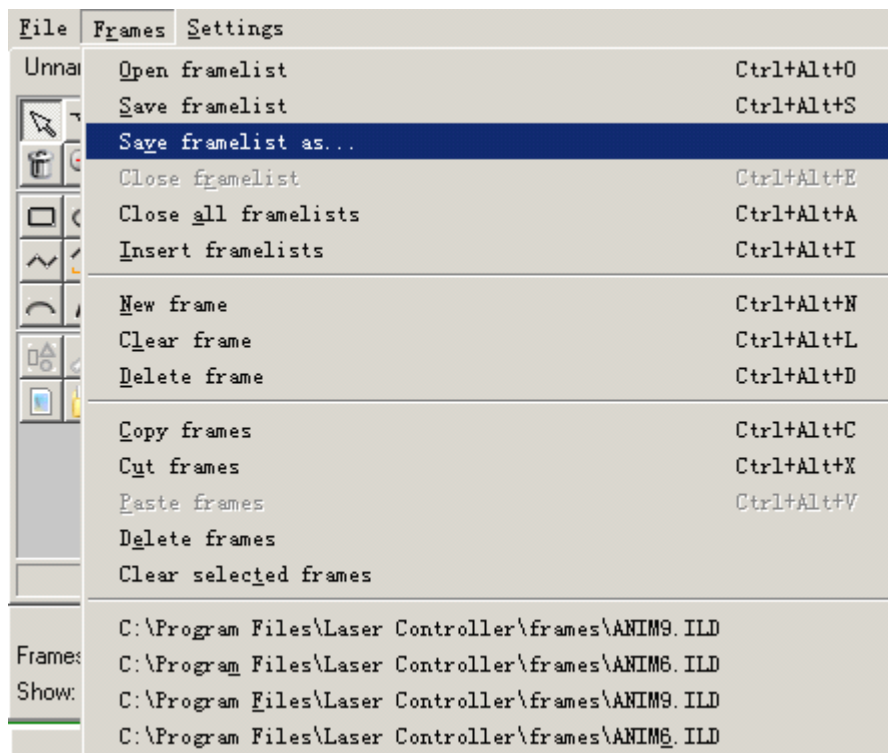


Right click on the blue area, select "New frame" item to create a new frame

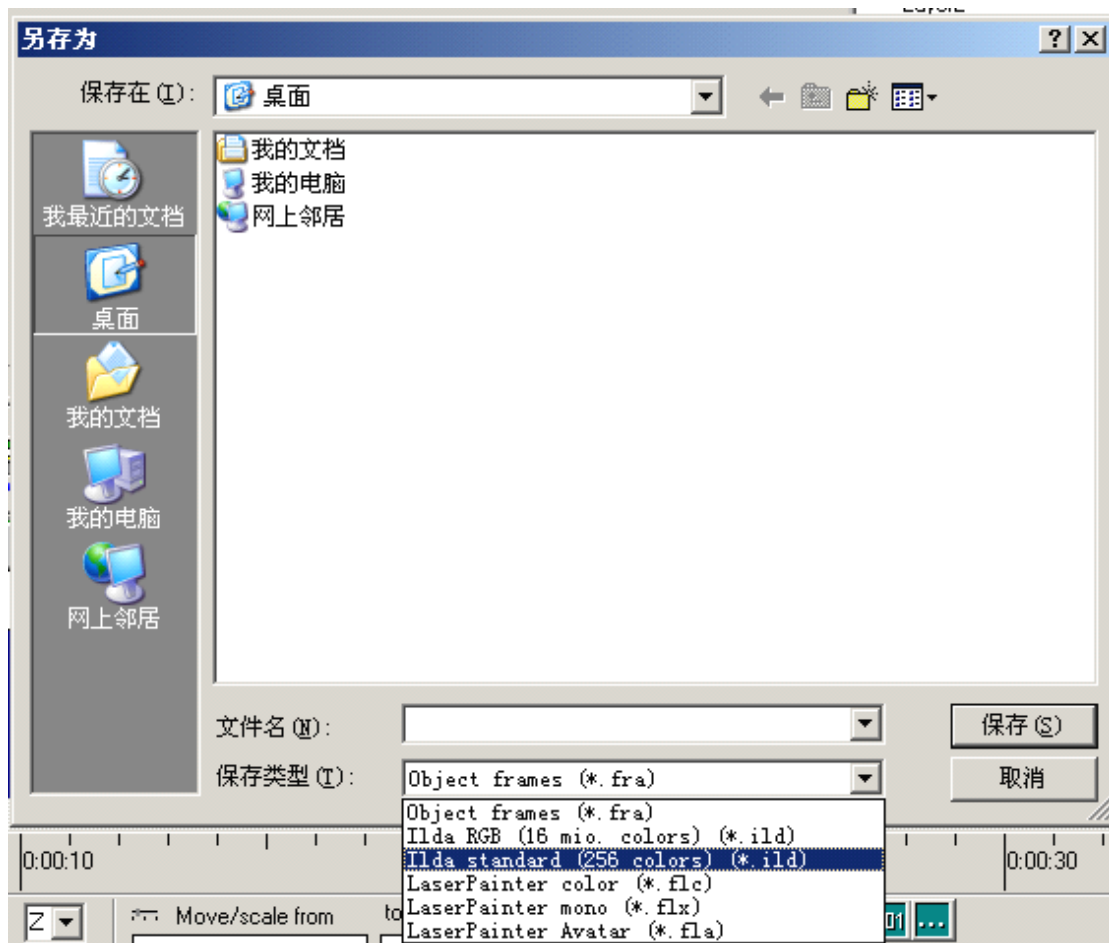


Double click the black rectangle, the picture will be show in the drawing area, you can create/modify the picture

# Save ILD file



Click “Save framelist as...” the dialog will occur as following



Select “Ilda standard (256 colors) (\*.ild)”, and input the file name you want, then click “Save” button

## Copy ild file to your SD card

Copy the ild file you have created to the SD card, then insert it to the box